

**DAMMON**  
ENGINEERING, INC.

CHIEF ENGINEER  
EMMETT  
DAMMON, P.E.  
CHIEF ARCHITECT  
ROBERT  
WILTSE

554 OLD SPANISH TRAIL  
SLIDELL, LA. 70458  
OFFICE: 985-649-5632  
FAX: 985-641-5950

WEBSITE:  
WWW.DAMMONENGINEERING.COM  
EMAIL:  
DAMMONENG@BELL.SOUTH.NET

ARCHITECTURE  
ENGINEERING  
STUDIES  
PLANNING  
INVESTIGATION  
EXPERT WITNESS

REROOFING OF  
ABNEY ELEM.  
SCHOOL

BLDG. B (#1978)  
825 KOSTMAYER AVE.  
SLIDELL, LA  
70458

ROOF  
DETAILS

REV:

SCALE: AS NOTED

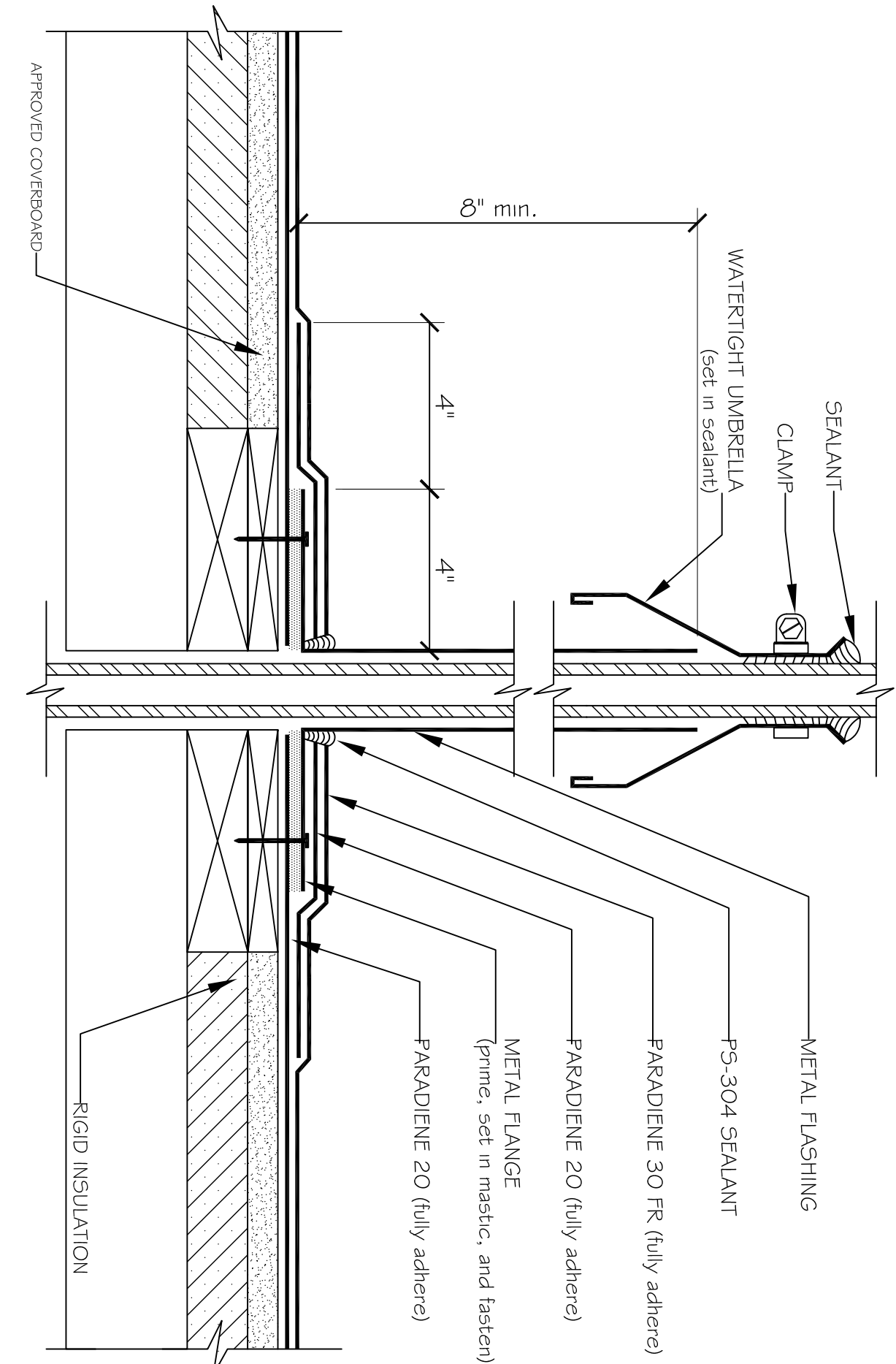
JOB#: 21145

DATE: 6-28-12

SHEET 4

OF 5

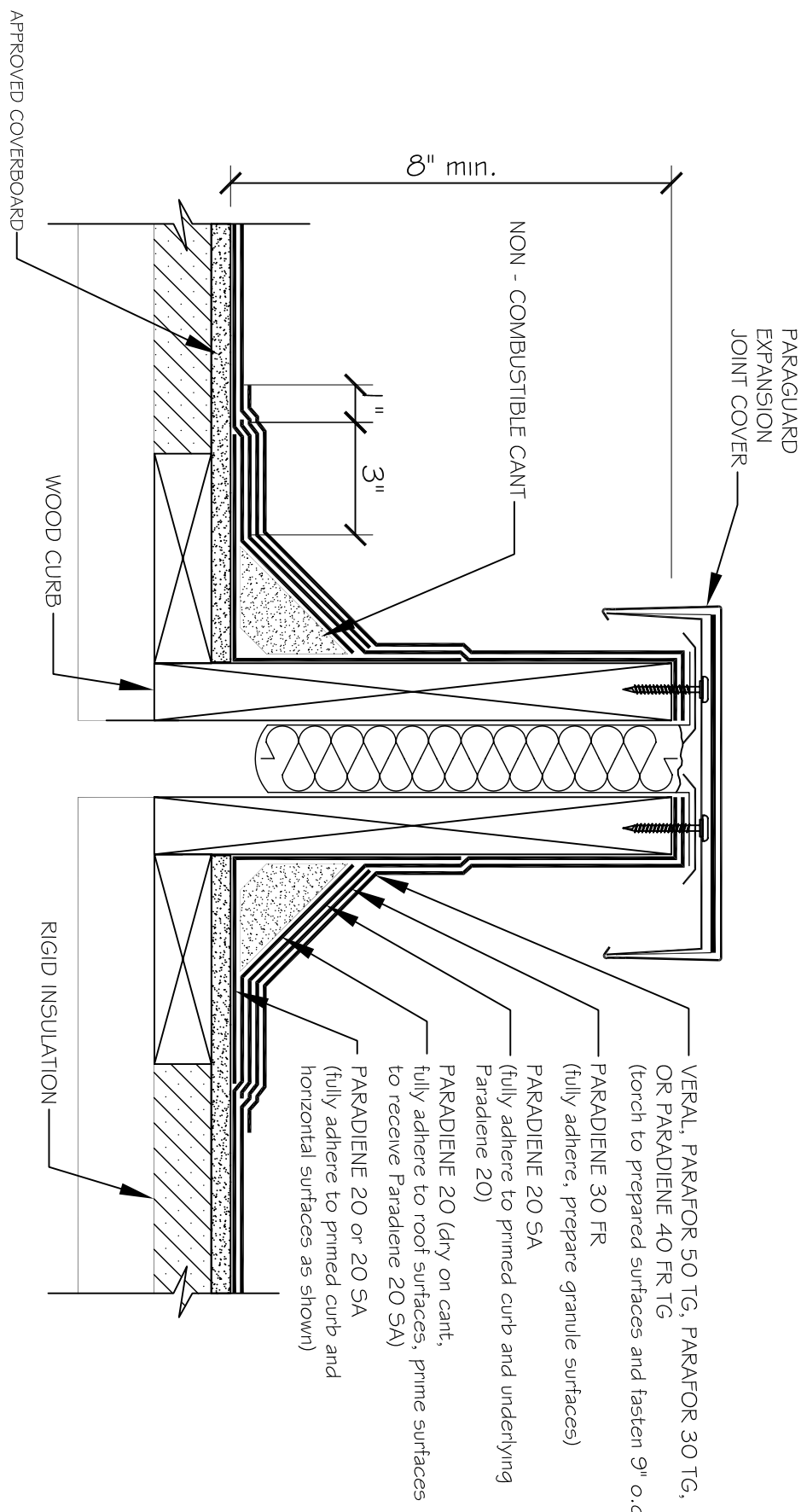
A-2



CONDUIT/SMALL PIPE PENETRATION DETAIL

N.T.S.

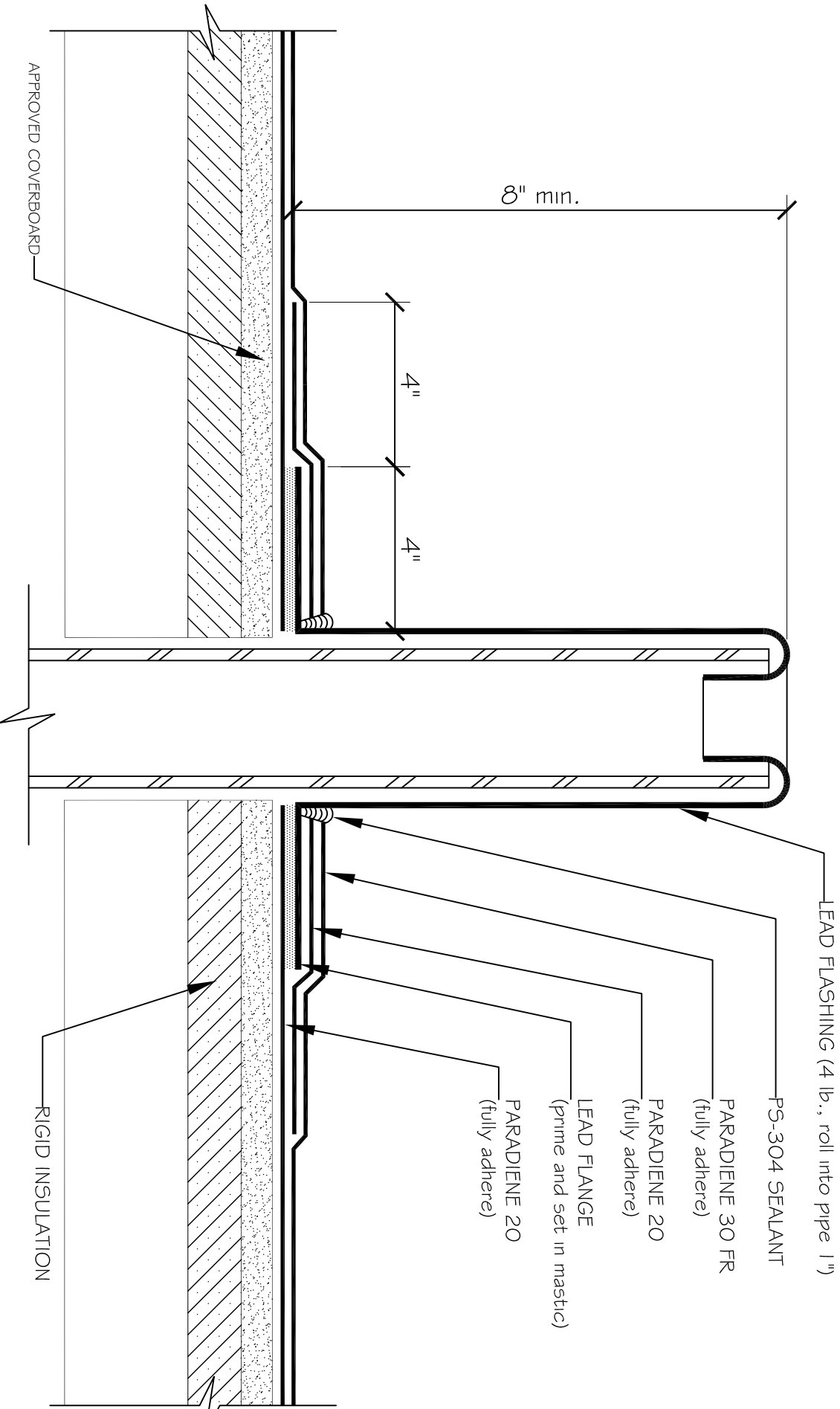
- NOTES:
1. WHERE PRIMER IS INDICATED TO MAINTAIN PROPER ADHESION, TA-119 PRIMER IS REQUIRED FOR ALL PARADIENT 20 SA FLASHING REINFORCING AND STRIPPING PLY APPLICATIONS. USE PA-1125 OR PA-917 IS FOR ALL NON-PARADIENT 20 SA APPLICATIONS. CONTACT SIPPLAST FOR SPECIFIC REQUIREMENTS.
  2. THE CARPENTRY AND METAL WORK SHOWN DEFECTS SHOP FABRICATION AND JOB-SITE ASSEMBLY. THESE COMPONENTS SHOULD BE DESIGNED/FABRICATED/INSTALLED ACCORDING TO GENERALLY ACCEPTED INDUSTRY PRACTICES, STANDARDS, AND APPROVALS.
  3. DISSIMILAR METAL TYPES SUBJECT TO ELECTROLYTIC REACTION SHOULD BE PHYSICALLY SEPARATED.
  4. REQUIREMENTS AND RECOMMENDATIONS DETAILED IN SIPPLAST SPECIFICATIONS SHALL APPLY IN ADDITION TO THE ABOVE DRAWING.
- CAUTION: SIPPLAST RECOMMENDS THAT ALL PRACTICES PERTAINING TO NRCA CERTA GUIDELINES BE FOLLOWED WHEN TORCHING METHODS ARE EMPLOYED. THIS INCLUDES PERFORMING A FIRE WATCH FOLLOWING ANY TORCH APPLICATIONS. ALWAYS HAVE APPROVED FIRE-EXTINGUISHING EQUIPMENT NEARBY.



PARAGUARD EXPANSION JOINT DETAIL

N.T.S.

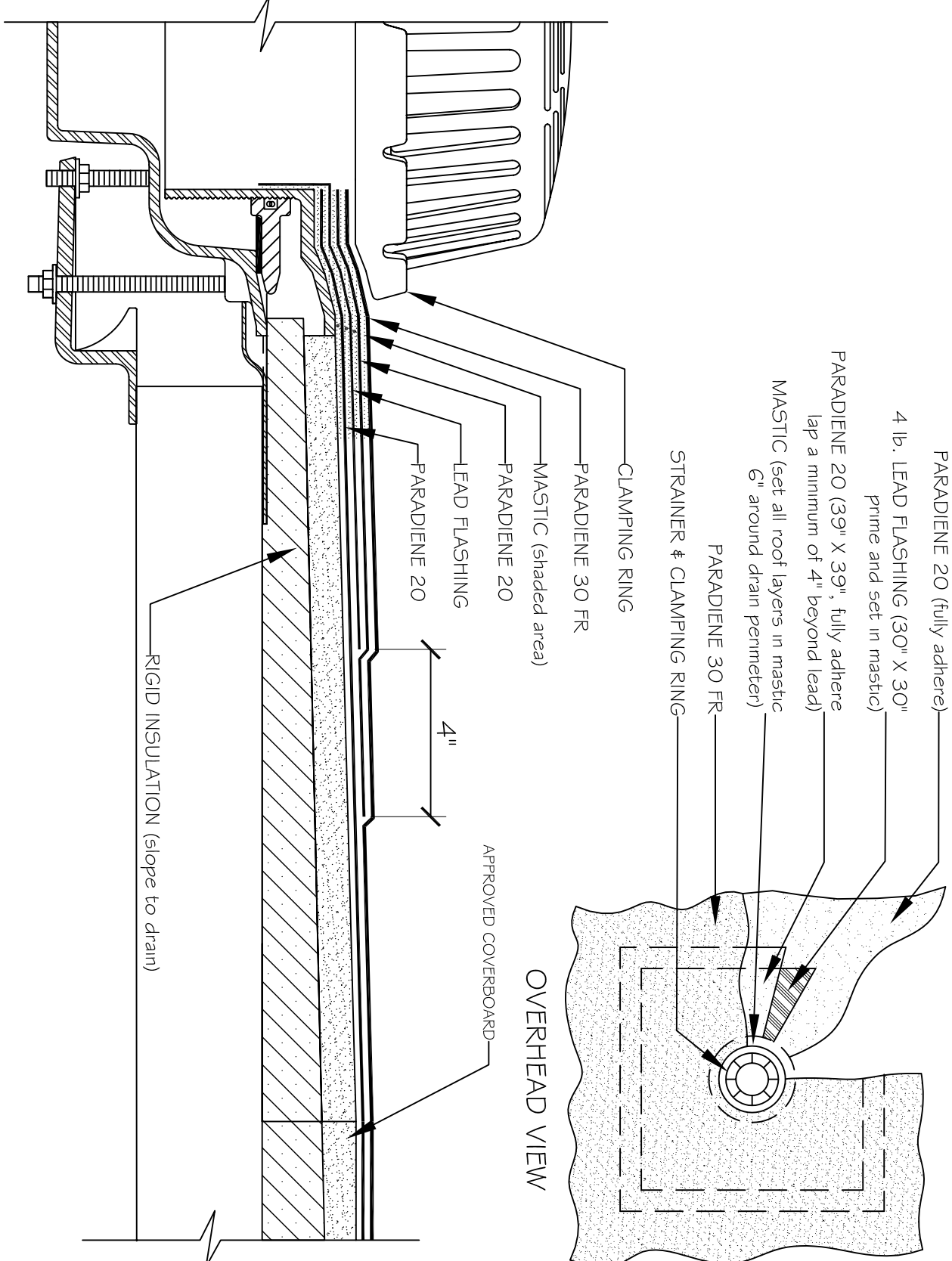
- NOTES:
1. REFER TO THE PARAGUARD ROOF PERIMETER SYSTEM INSTALLERS GUIDE FOR INFORMATION ON PRODUCTS, SIZING, AND INSTALLATION OF THE PARAGUARD SYSTEM.
  2. WHERE PRIMER IS INDICATED TO MAINTAIN PROPER ADHESION, TA-119 PRIMER IS REQUIRED FOR ALL PARADIENT 20 SA FLASHING REINFORCING AND STRIPPING PLY APPLICATIONS. USE PA-1125 OR PA-917 IS FOR ALL NON-PARADIENT 20 SA APPLICATIONS. CONTACT SIPPLAST FOR SPECIFIC REQUIREMENTS.
  3. THE CARPENTRY WORK SHOWN DEFECTS SHOP FABRICATION AND JOB-SITE ASSEMBLY. THESE COMPONENTS SHOULD BE DESIGNED/FABRICATED/INSTALLED ACCORDING TO GENERALLY ACCEPTED INDUSTRY PRACTICES, STANDARDS, AND APPROVALS.
  4. DISSIMILAR METAL TYPES SUBJECT TO ELECTROLYTIC REACTION SHOULD BE PHYSICALLY SEPARATED.
  5. REQUIREMENTS AND RECOMMENDATIONS DETAILED IN SIPPLAST SPECIFICATIONS SHALL APPLY IN ADDITION TO THE ABOVE DRAWING.
- CAUTION: SIPPLAST RECOMMENDS THAT ALL PRACTICES PERTAINING TO NRCA CERTA GUIDELINES BE FOLLOWED WHEN TORCHING METHODS ARE EMPLOYED. THIS INCLUDES PERFORMING A FIRE WATCH FOLLOWING ANY TORCH APPLICATIONS. ALWAYS HAVE APPROVED FIRE-EXTINGUISHING EQUIPMENT NEARBY.



WASTE STACK DETAIL

N.T.S.

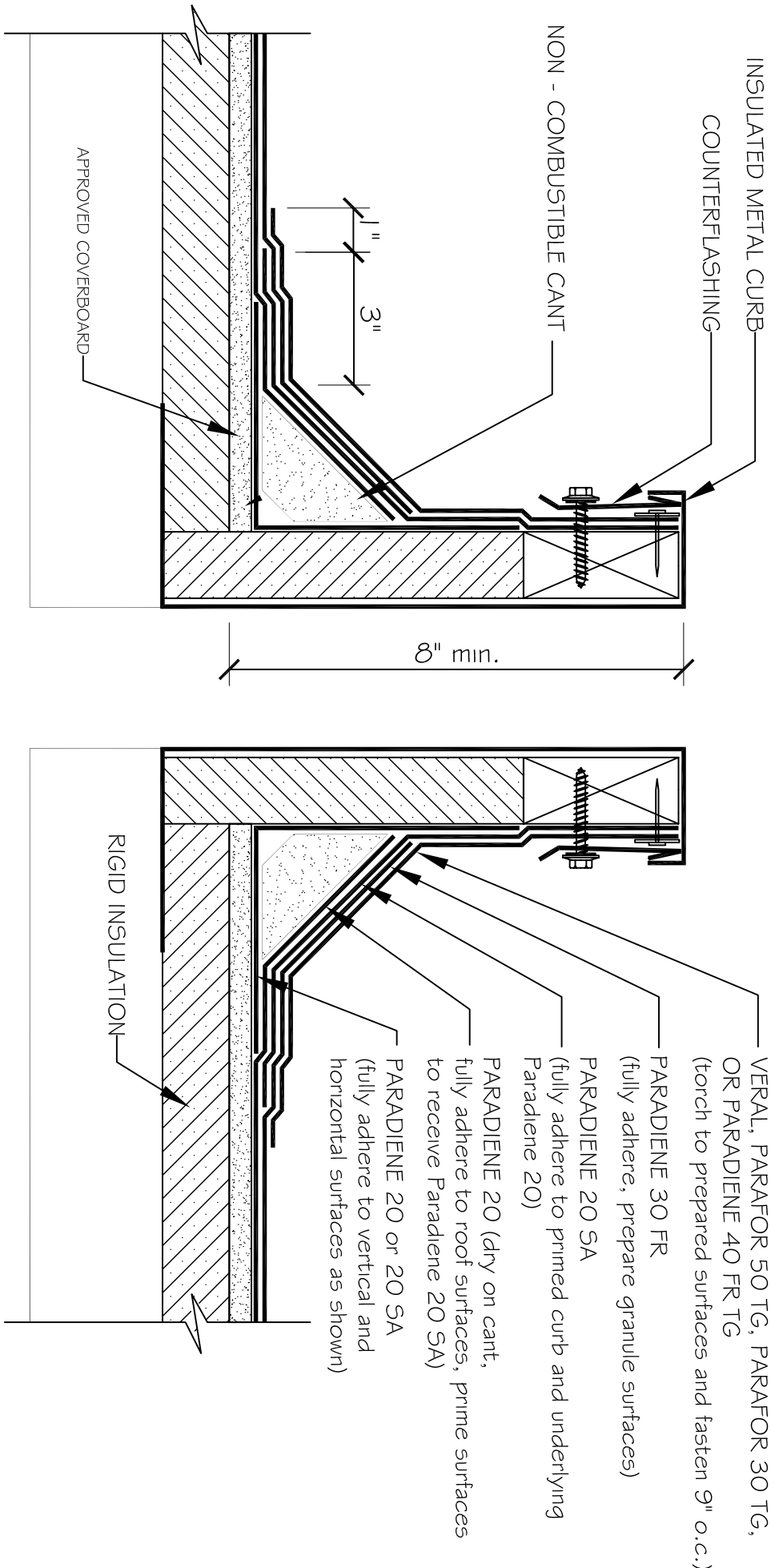
- NOTES:
1. WHERE PRIMER IS INDICATED TO MAINTAIN PROPER ADHESION, TA-119 PRIMER IS REQUIRED FOR ALL PARADIENT 20 SA FLASHING REINFORCING AND STRIPPING PLY APPLICATIONS. USE PA-1125 OR PA-917 IS FOR ALL NON-PARADIENT 20 SA APPLICATIONS. CONTACT SIPPLAST FOR SPECIFIC REQUIREMENTS.
  2. REQUIREMENTS AND RECOMMENDATIONS DETAILED IN SIPPLAST SPECIFICATIONS SHALL APPLY IN ADDITION TO THE ABOVE DRAWING.
- CAUTION: SIPPLAST RECOMMENDS THAT ALL PRACTICES PERTAINING TO NRCA CERTA GUIDELINES BE FOLLOWED WHEN TORCHING METHODS ARE EMPLOYED. THIS INCLUDES PERFORMING A FIRE WATCH FOLLOWING ANY TORCH APPLICATIONS. ALWAYS HAVE APPROVED FIRE-EXTINGUISHING EQUIPMENT NEARBY.



ROOF DRAIN DETAIL

N.T.S.

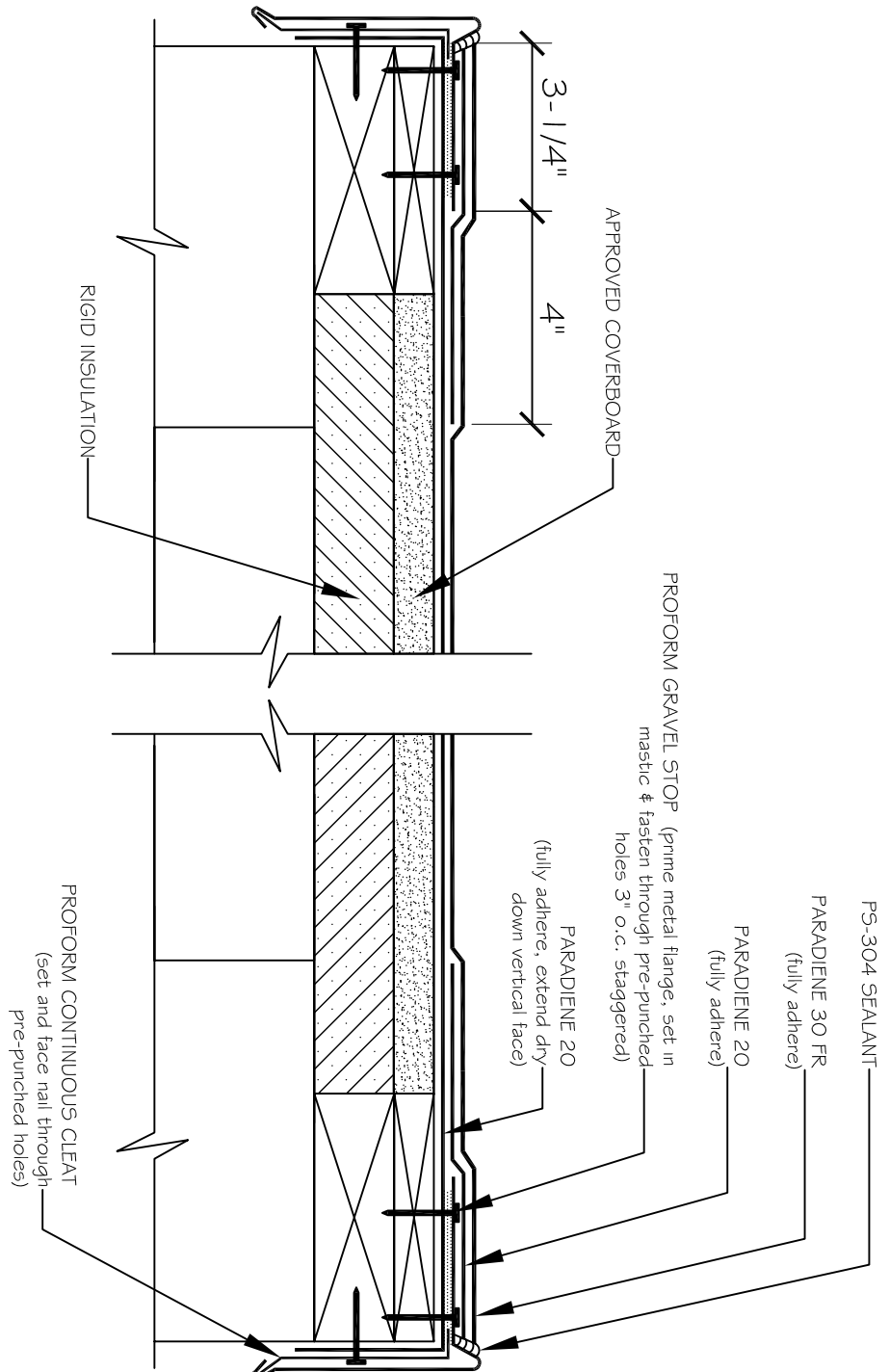
- NOTES:
1. WHERE PRIMER IS INDICATED TO MAINTAIN PROPER ADHESION, TA-119 PRIMER IS REQUIRED FOR ALL PARADIENT 20 SA FLASHING REINFORCING AND STRIPPING PLY APPLICATIONS. USE PA-1125 OR PA-917 IS FOR ALL NON-PARADIENT 20 SA APPLICATIONS. CONTACT SIPPLAST FOR SPECIFIC REQUIREMENTS.
  2. ROOF DRAIN COMPONENTS AND INSTALLATION GUIDELINES ARE SUPPLIED BY THE DRAIN MANUFACTURER.
  3. REQUIREMENTS AND RECOMMENDATIONS DETAILED IN SIPPLAST SPECIFICATIONS SHALL APPLY IN ADDITION TO THE ABOVE DRAWING.
- CAUTION: SIPPLAST RECOMMENDS THAT ALL PRACTICES PERTAINING TO NRCA CERTA GUIDELINES BE FOLLOWED WHEN TORCHING METHODS ARE EMPLOYED. THIS INCLUDES PERFORMING A FIRE WATCH FOLLOWING ANY TORCH APPLICATIONS. ALWAYS HAVE APPROVED FIRE-EXTINGUISHING EQUIPMENT NEARBY.



HVAC CURB DETAIL

N.T.S.

- NOTES:
1. PREPARE GRANULE SURFACES UNDER FLASHING BY TORCH PREPARATION.
  2. WHERE PRIMER IS INDICATED TO MAINTAIN PROPER ADHESION, TA-119 PRIMER IS REQUIRED FOR ALL PARADIENT 20 SA FLASHING REINFORCING AND STRIPPING PLY APPLICATIONS. USE PA-1125 OR PA-917 IS FOR ALL NON-PARADIENT 20 SA APPLICATIONS. CONTACT SIPPLAST FOR SPECIFIC REQUIREMENTS.
  3. THE CARPENTRY AND METAL WORK SHOWN DEFECTS SHOP FABRICATION AND JOB-SITE ASSEMBLY. THESE COMPONENTS SHOULD BE DESIGNED/FABRICATED/INSTALLED ACCORDING TO GENERALLY ACCEPTED INDUSTRY PRACTICES, STANDARDS, AND APPROVALS.
  4. DISSIMILAR METAL TYPES SUBJECT TO ELECTROLYTIC REACTION SHOULD BE PHYSICALLY SEPARATED.
  5. REQUIREMENTS AND RECOMMENDATIONS DETAILED IN SIPPLAST SPECIFICATIONS SHALL APPLY IN ADDITION TO THE ABOVE DRAWING.



PROFORM GRAVEL STOP DETAIL

N.T.S.

- NOTES:
1. REFER TO THE PARAGUARD ROOF PERIMETER SYSTEMS INSTALLERS GUIDE FOR INFORMATION ON PRODUCTS, SIZING, AND INSTALLATION OF THE PARAGUARD SYSTEM.
  2. WHERE PRIMER IS INDICATED TO MAINTAIN PROPER ADHESION, TA-119 PRIMER IS REQUIRED FOR ALL PARADIENT 20 SA FLASHING REINFORCING AND STRIPPING PLY APPLICATIONS. USE PA-1125 OR PA-917 IS FOR ALL NON-PARADIENT 20 SA APPLICATIONS. CONTACT SIPPLAST FOR SPECIFIC REQUIREMENTS.
  3. PREPARE GRANULE SURFACES UNDER FLASHING BY TORCH PREPARATION.
  4. THE CARPENTRY SHOWN DEFECTS JOB-SITE ASSEMBLY AND SHOULD BE CONSTRUCTED ACCORDING TO GENERALLY ACCEPTED PRACTICES, STANDARDS, AND APPROVALS.
  5. REQUIREMENTS AND RECOMMENDATIONS DETAILED IN SIPPLAST SPECIFICATIONS SHALL APPLY IN ADDITION TO THE ABOVE DRAWING.
- CAUTION: SIPPLAST RECOMMENDS THAT ALL PRACTICES PERTAINING TO NRCA CERTA GUIDELINES BE FOLLOWED WHEN TORCHING METHODS ARE EMPLOYED. THIS INCLUDES PERFORMING A FIRE WATCH FOLLOWING ANY TORCH APPLICATIONS. ALWAYS HAVE APPROVED FIRE-EXTINGUISHING EQUIPMENT NEARBY.